



MONTHLY MEMBERSHIP PROGRESS REPORT

District 9 EC

Results as of: 2/28/2017

GMT: Judy Hankom

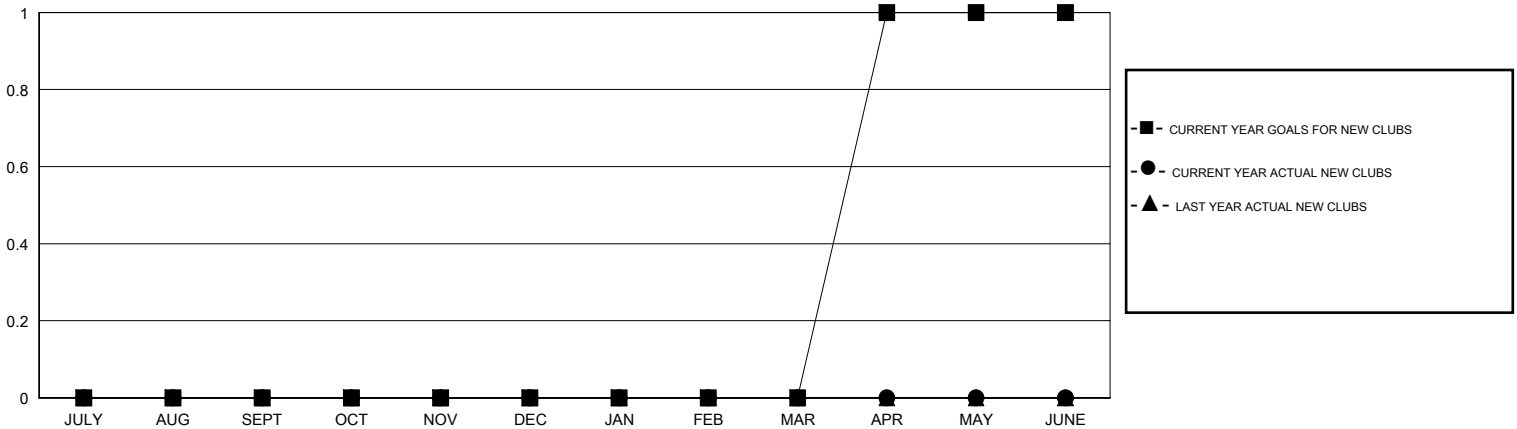
LOCATION IOWA

GMT CA

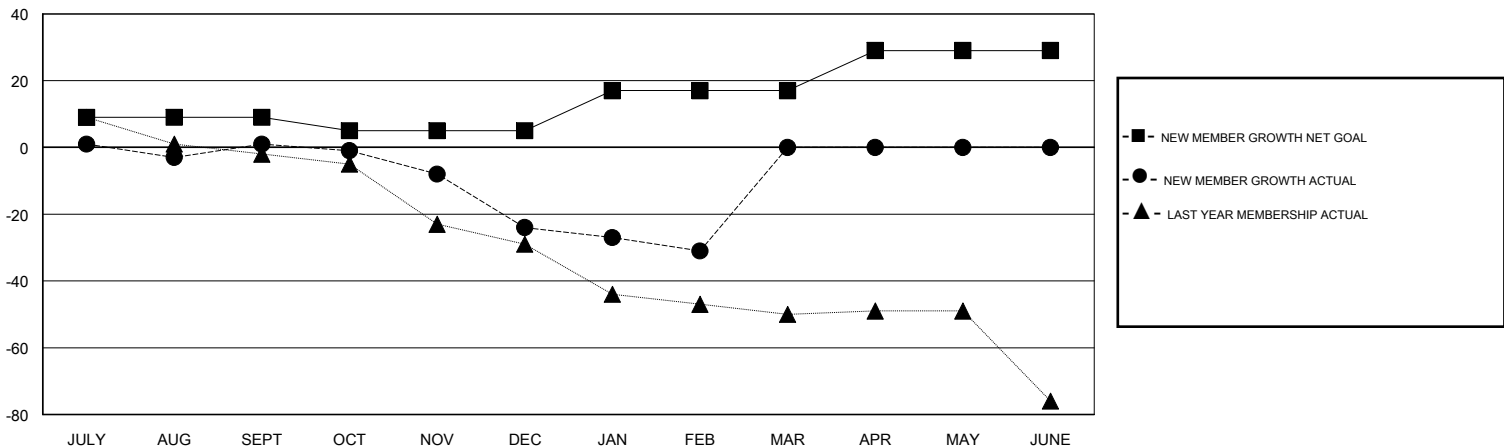
Clubs			
RESULTS FOR 2016-2017			
QUARTER	NEW CLUB GOAL	NEW CLUBS	DROPPED CLUBS
JULY/AUG/SEPT	0	0	0
OCT/NOV/DEC	0	0	0
JAN/FEB/MAR	0	0	0
APR/MAY/JUNE	1	0	0

Members			
RESULTS FOR 2016-2017			
QUARTER	NEW MEMBER GROWTH NET GOAL (not reinstated or transfers)	NEW MEMBER GROWTH ACTUAL (not reinstated or transfers)	DROPPED MEMBERS ACTUAL (including transfers)
JULY/AUG/SEPT	9	38	37
OCT/NOV/DEC	-4	13	38
JAN/FEB/MAR	12	9	16
APR/MAY/JUNE	12	0	0

GOALS AND ACTUAL NEW CLUBS CUMULATIVE



GOALS AND ACTUAL MEMBERS CUMULATIVE



DROPPED CLUBS: 0	23 CLUBS OF 45 ADDED 1 OR MORE NEW MEMBERS	<u>GENDER DISTRIBUTION</u>	
DROPPED MEMBERS		MALE	970 (71.91%)
DECEASED	13	FEMALE	379 (28.09%)
CLUB CANCELLED	0	TOTAL FAMILY UNIT MEMBERS	
OTHER	78	329	
TOTAL	91	FAMILY MEMBERS PAYING HALF DUES	
		166	

[CLICK HERE FOR CUMULATIVE MEMBERSHIP DATA](#)